

# Licensee Information Bulletin



ISSUE # 9

1

December 2011

## New Year's Eve Closure



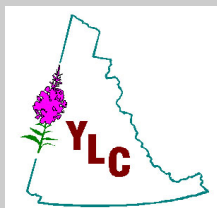
Just a reminder that on December 31<sup>st</sup> licensed premises, with the exception of Off-Sales, may remain open until **3:00 a.m.** The *Liquor Act* provides for the extended hours while Board policy explains it further.

No premises may be open for more than 15 continuous hours on that day. This means if you operate a food primary where the approved hours of liquor service are from 10:00 a.m. until 11:00 p.m., you may choose to remain open until 3:00 a.m. However, you may not begin liquor service until noon. A liquor primary that is regularly open from 11:00 a.m. until 1:00 a.m. may also remain open until 3:00 a.m. Again however, you may not begin liquor service before noon.

In the case of liquor primary, the half-hour tolerance still applies. Liquor service must be stopped by 3:00 a.m. and patrons must be out by 3:30 a.m.

As a reminder, all Off-Sales must close at 12 midnight.

## Yukon Liquor Corporation



9031 Quartz Road  
Whitehorse, YT Y1A 4P9

Ph: (867) 667-5245  
Fx: (867) 393-6306

Website: [www.ylc.yk.ca](http://www.ylc.yk.ca)

Email: [yukon.liquor@gov.yk.ca](mailto:yukon.liquor@gov.yk.ca)

## Municipal Election

The Municipal Election will be held Thursday, December 1, 2011. During polling hours licensed premises **can be open** for the sale of liquor.

## New Licences



- Y **Casa Loma Restaurant** Whse: Food Primary-Beer/Wine Licence
- Y **Son's Restaurant** Whse: Food Primary-Beer/Wine
- Y **Bailey's Pub & Steakhouse** Whse: Food Primary-All Liquor Licence & Off Premises Liquor Licence
- Y **Jct 37 W L:** Food Primary-Beer/Wine
- Y **Cork & Bull** Whse: Food Primary-All Liquor

## RCMP Checkstops



Impaired driving remains the leading criminal cause of death in Canada. RCMP Traffic Services is keeping a close watch on the Yukon's highways for motorists who drink and drive. Random check stops will be conducted throughout the Yukon during the holiday season.

The Yukon Liquor Corporation has partnered with the RCMP, Department of Highways and Public Works and the local MADD chapter to provide handouts for drivers that pass through the check stops without incident. The giveaways are to thank and applaud drivers who make the right decision of not driving after an evening of drinking.

## Safety Reminder

Please do your part to ensure your patrons drink responsibly and "Plan Ahead to Get Home Safe" during the upcoming festive season.

# December 2011 Bulletin



ISSUE # 9  
2  
December 2011



## 2011 Twin Bears



The annual Yukon Liquor Corporation Twin Bear campaign continues this year. Since 1992, we have been inviting store customers to share in the spirit of the holiday season through this ever-popular program.

Yukon liquor store customers are invited to buy twin teddy bears for \$10. One bear goes home with the customer, while the other is given to someone special during the holiday season. Each year, the bears bring comfort to kids in care and in need, from hospitalized children, to those in shelters and those receiving Christmas hampers. Since this program began, more than 8,000 bears have brought smiles to little faces.



## Liquor Orders



A reminder to **all** liquor licensees and permittees, that liquor orders should be **placed and picked up through YLC's central warehouse** located at 9031 Quartz Rd, for those in and around the Whitehorse area.

The standard turn around time upon placing the order is 24 hours during normal business hours Monday to Friday. Placing your liquor order through our sales desk ensures the Whitehorse Liquor Store has enough product in stock for regular customers. Please contact YLC Sales Desk at (867) 667-5246 or print off the liquor order form at: <http://www.ylc.yk.ca/forms.html>

An emergency low quantity purchase may be considered by the Whitehorse Store Management in advance @ 667-3630.



## HOURS OF OPERATION

### Central Warehouse

Monday-Friday 8:00 am to 4:00 pm  
Orders received during normal business hours will be ready for pickup within 24 hours. (Orders placed on Friday will be ready on Monday.)

**Closed - Dec. 26th, 27th & Jan. 2nd.**

### Whitehorse Liquor Store

Monday-Thursday 10:00 am to 6:00 pm  
Friday 10:00 am to 8:00 pm  
Saturday 10:00 am to 6:00 pm  
Closed Sunday

**Holiday Hours: 10:00 am to 8:00**

**pm, Dec. 19-23 AMENDED**

**Closed - Dec. 26th, 27th & Jan. 2nd.**

### Dawson, Faro, Haines Junction, Mayo\* & Watson Lake

Tuesday-Saturday 10:00 am to 6:00 pm  
Closed-Sunday & Monday

**Closed - Dec. 26th, 27th, 28th & Jan. 3rd.**

\*Mayo store closed between 1:00 - 2:00 pm



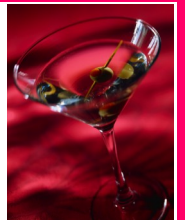
## Rudy's Warm Up

2 oz warm milk, 1 tbsp choc. sauce,  
4 oz hot coffee. Garnish with an orange slice!



## Candy Cane Tini

1/2 oz peppermint schnapps  
1 oz vodka  
Crushed candy cane with one extra hanging on the rim...



**Shake & serve**